

SECTION THRU WALL SHOWING TYPICAL REINFORCEMENT LAYOUT

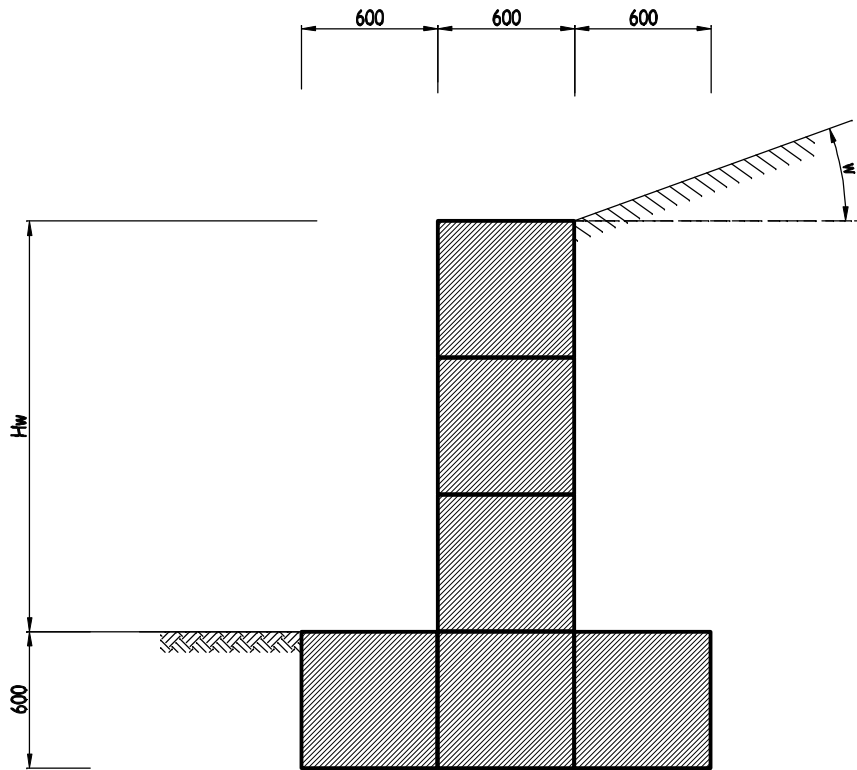
DESIGN BASIS

Foundation soil has allowable bearing pressure not less than 100 kPa

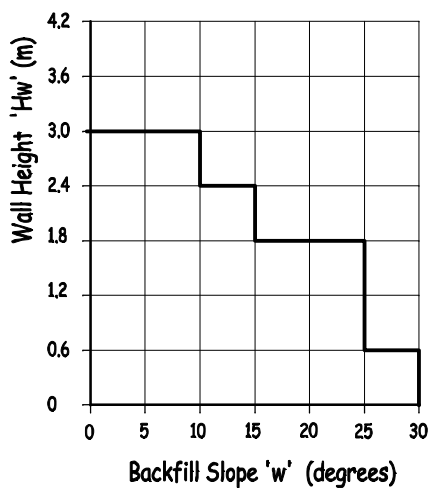
Subsoil drainage is provided on rear face of wall to prevent build up of hydrostatic pressures

Live load surcharge on retained soil with slopes of 20 degrees or less is not greater than 5 kPa

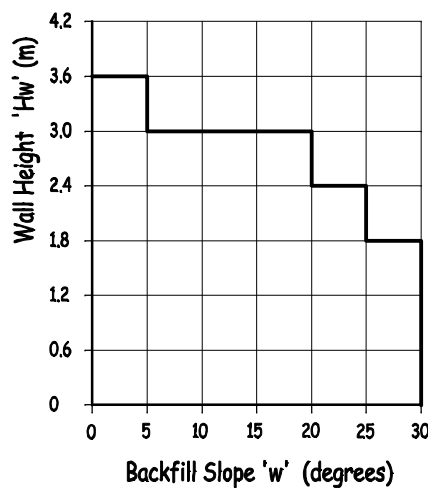
Walls constructed within 'coastal frontage' exposure zone require additional protection for steel reinforcement.



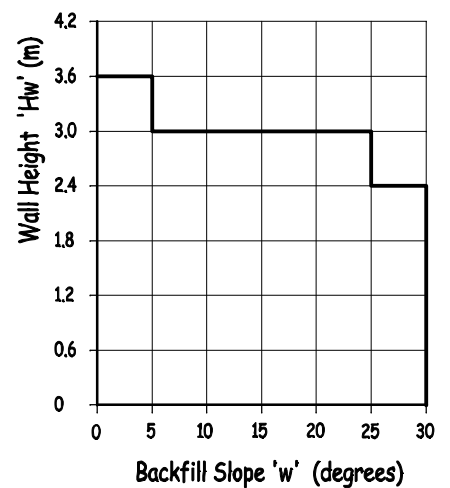
TYPE 1 WALL



SILTS & SANDS

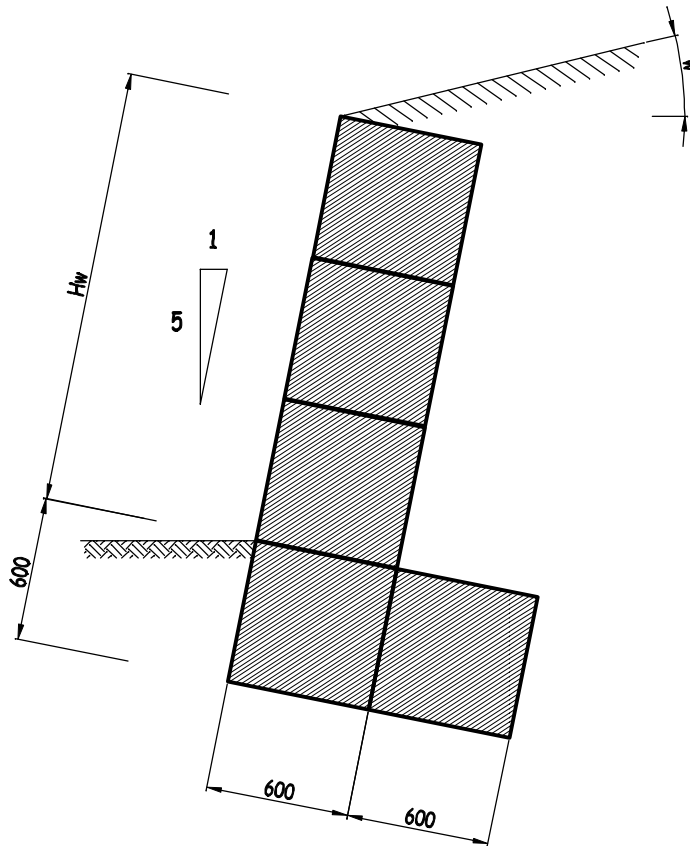


SANDY SHINGLE

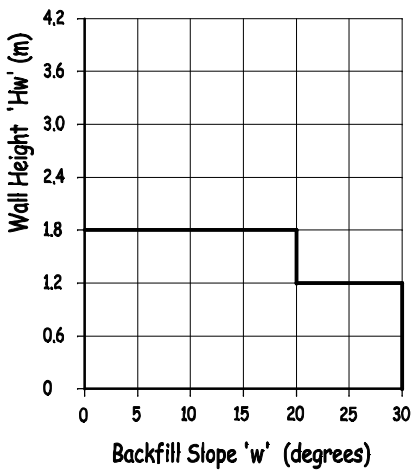


SANDY CLAY

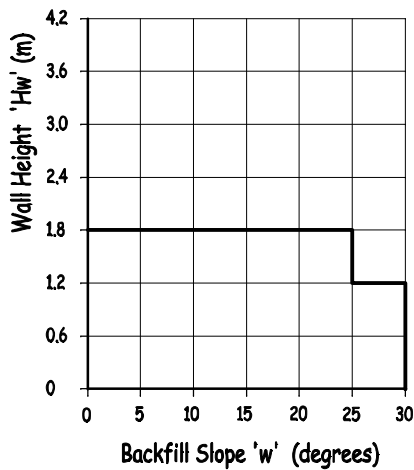
APPROXIMATE MAXIMUM RETAINING WALL HEIGHT - H_w
FOR VARIOUS RETAINED SOIL TYPES



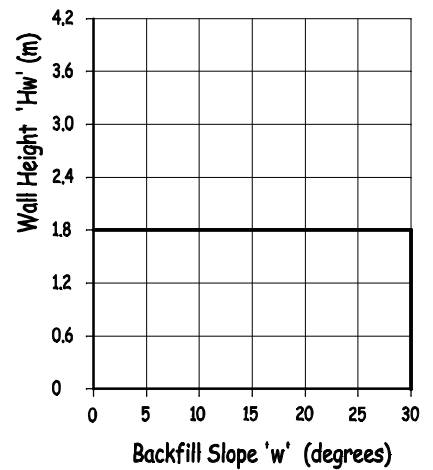
TYPE 2 WALL



SILTS & SANDS

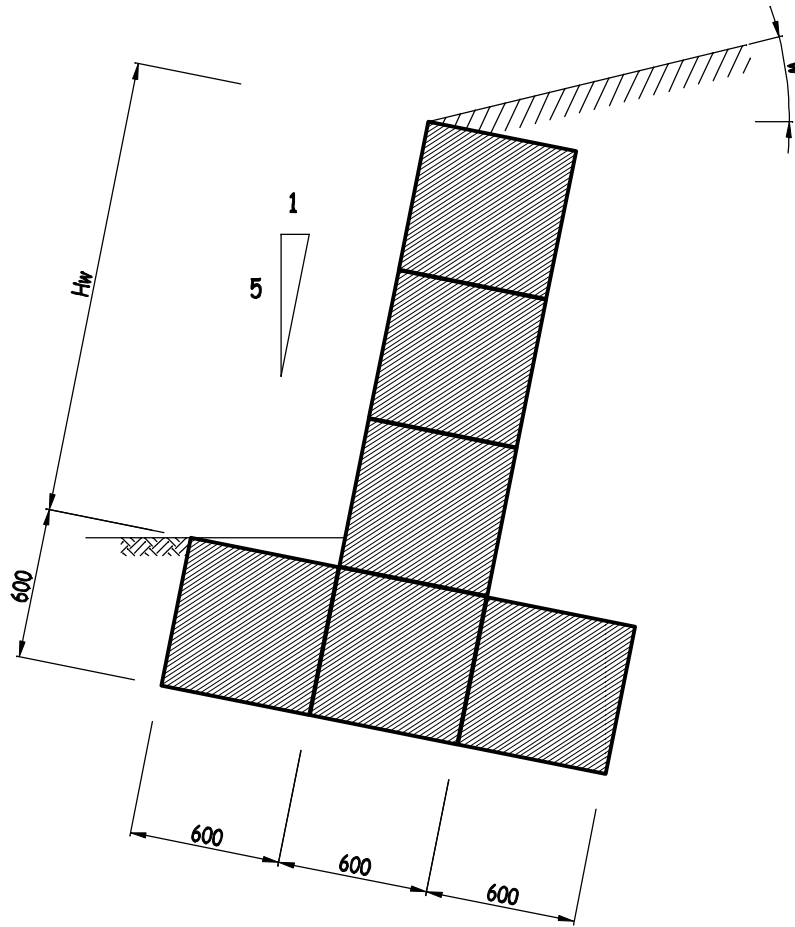


SANDY SHINGLE

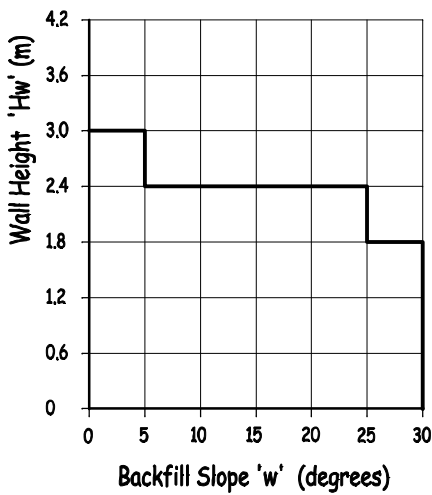


SANDY CLAY

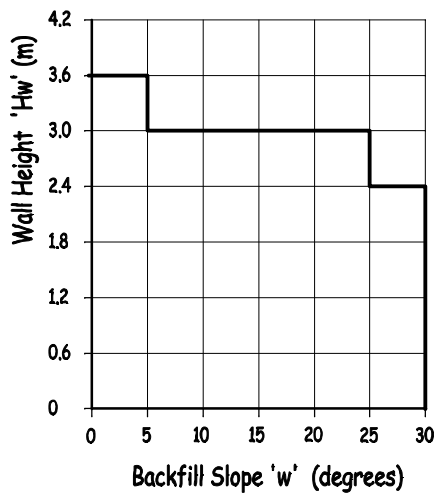
APPROXIMATE MAXIMUM RETAINING WALL HEIGHT - H_w
FOR VARIOUS RETAINED SOIL TYPES



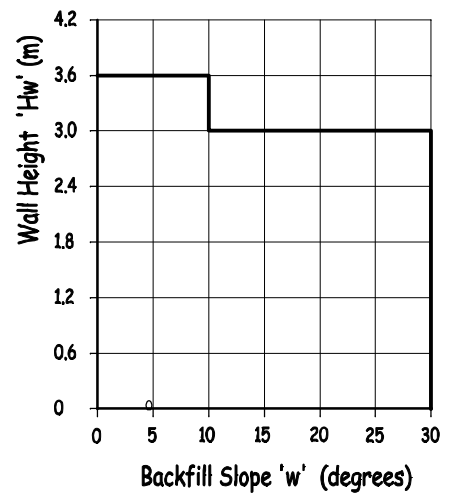
TYPE 3 WALL



SILTS & SANDS



SANDY SHINGLE



SANDY CLAY

APPROXIMATE MAXIMUM RETAINING WALL HEIGHT - H_w
FOR VARIOUS RETAINED SOIL TYPES